



Project

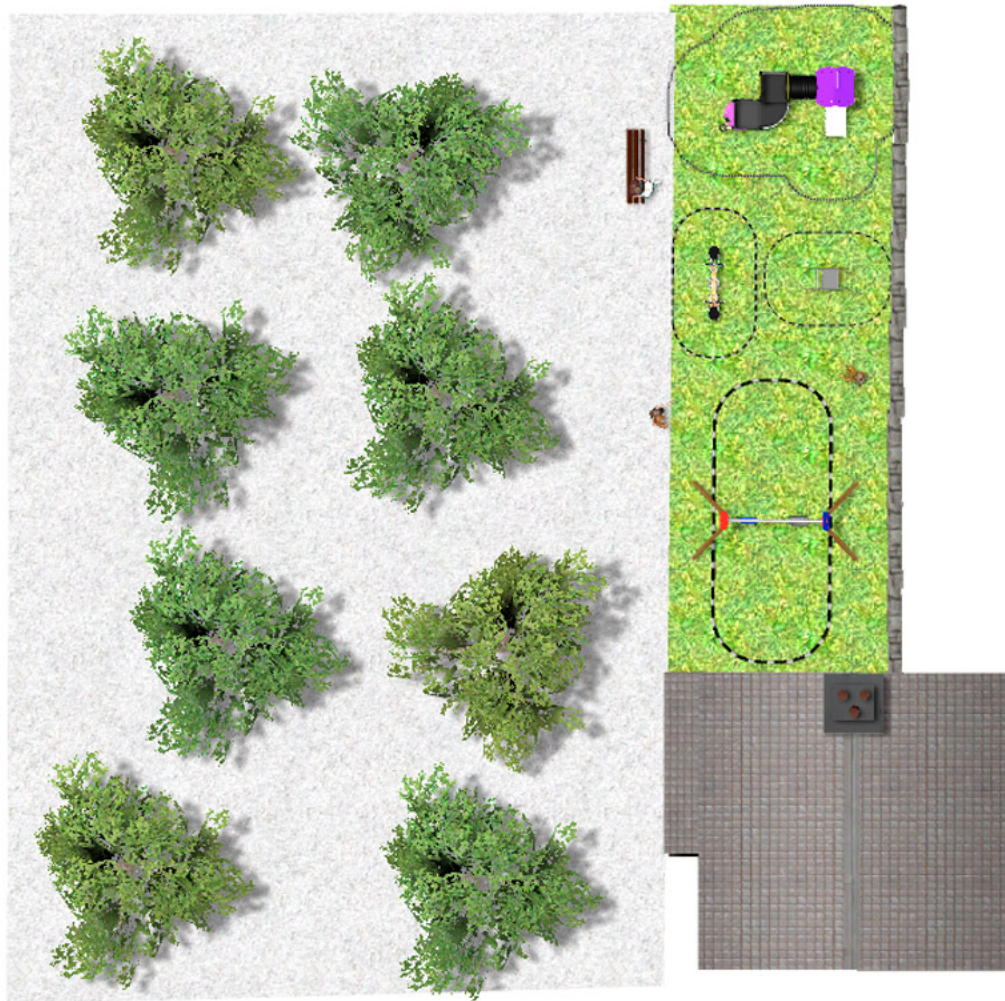
PROJ-061-2018

Surface: 110 m²

Email: info@benito.com

Telephone: +34 93 852 1000

BENITO
-Playground Equipment

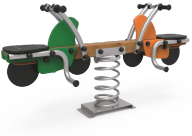





BENITO
-Playground Equipment



BENITO
-Playground Equipment



Product	Description
<p>JFS10</p> 	<p>Rider Fun and educative see-saw for children. Made of resistant materials according to the EN1176 standard.</p> <p>Data Sheet Certificate Certificate Conformity</p>
<p>JJMM03</p> 	<p>Julián Designed by Javier Mariscal. Half-artist half-designer, his childlike strokes and Latin aesthetic combine perfectly with this kind of product.</p> <p>Data Sheet Certificate Certificate Conformity</p>
<p>JL1511000</p> 	<p>MADERA 1 Flat 1 Cradle Swings for children made of different materials such as wood and steel. Resistant to abrasion, corrosion and bad weather conditions.</p> <p>Data Sheet JL1511000 Certificate Certificate Conformity</p>
<p>JPVA03</p> 	<p>Artic 3 The ARTIC collection is functional and compact. It consists on modular tower combinations for the smallest to the eldest children. Ideal for space limited playground areas and to combine different elements in larger spaces too.</p> <p>Data Sheet JPVA03 Certificate</p>