



UM565

Fountain

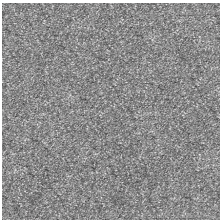
Petrus

By BRC Design © BENITO

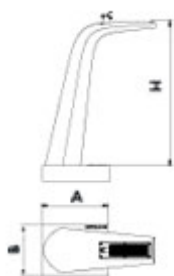


PETRUS designer Fountain, total dimensions (Ø x H) 350 x 970 mm, made of concrete. Robust, with an elegant and lightweight design, it can blend into any unique setting. Easy to install, it comes equipped with the necessary connections for water inlet and drainage. It does not require grates or visible drains, and is free of splashing, rust, maintenance, water buildup, unpleasant odors, etc. Accessible, can be used by a wheelchair user.

Concrete: Reinforced concrete with a pickled and water-repellent finish. Manufactured with cement, sand, and gravel embedded within a metal structure. Shot blasting results in a high-quality, durable texture.



Gray



| Ref. | A | B | H1 |
|-------|-----|-----|-----|
| UM565 | 450 | 350 | 970 |

Petrus
UM1619



Petrus
ICHP40



