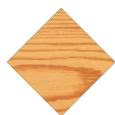


UM531

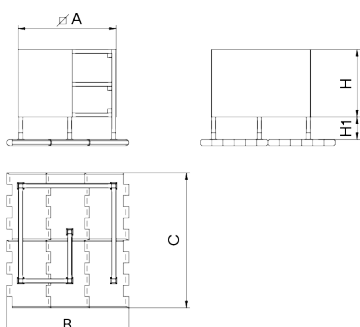
Surf



Pine
Wood



Pressure-treated pine wood, risk factor IV, ensuring its durability outdoors for a minimum period of 10 years. Under weather conditions, treated wood develops a warm honey-brown color that eventually turns into a natural silver-gray. If exposed to variable weather conditions, this type of pine wood may develop some surface cracks that do not diminish its durability in any way. Regarding resin and knots, it's important to note that these are part of its natural appearance.



Ref.	A	B	C	H	H1
UM531	2000	2720	3000	1350	500

Surf MAD
UM532



