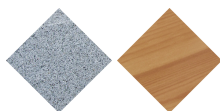




UM372SLP

Chair

Silla Kube P



Precast
Concrete

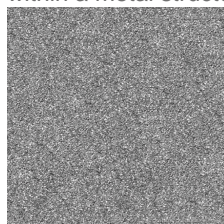
Hard
wood



KUBE PLUS 500 designer chair, total dimensions (length x height x depth) 500x775x500 mm, made of rough-looking granite-grey prefabricated concrete and bench made of natural tropical wood planks (treated with a triple-layer Lignus coating, a fungicidal, insecticidal and water-repellent protector). It can be placed individually or in groups. It rests on a prepared surface under its own weight.

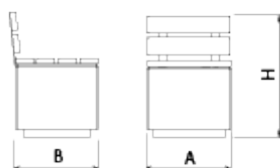
Optional not included: Customizable marking with 74x35 mm aluminum plate or milled board.

Concrete: Reinforced concrete with a pickled and water-repellent finish. Manufactured with cement, sand, and gravel embedded within a metal structure. Shot blasting results in a high-quality, durable texture.



Gray

Hardwood treated with LIGNUS: Wood from responsible forestry. Density greater than 930kg/m³, at 12% humidity, treated with a triple-layer LIGNUS coating, fungicide, insecticide, and water-repellent that provides protection against moisture penetration. Final finish with a layer of natural pigment in a satin finish, which provides additional protection against UV rays, the main cause of deterioration in this type of material.



Ref.	A	B	B1	H
UM372LP	2000	500	-	775
UM372SLP	500	500	-	775
UM372LPL	2000	500	-	495

