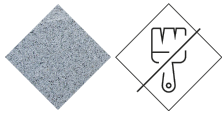


UM372S

Chair

Kube

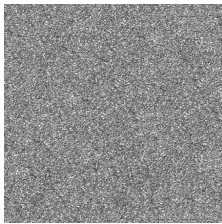


Precast Concrete Low maintenance



KUBE designer Bench , total dimensions (length x height x depth) 500 x 450 x 500 mm, made of rough, granite-gray precast concrete. It can be placed individually or in groups. It rests on a prepared surface under its own weight.

Concrete: Reinforced concrete with a pickled and water-repellent finish. Manufactured with cement, sand, and gravel embedded within a metal structure. Shot blasting results in a high-quality, durable texture.



Gray



Ref.	A	B	B1	H
UM372	2000	500	-	450
UM372S	500	500	-	450
UM348S	Ø 580	-	-	450
UM372SK	500	490	418	450

Kube
UM372

