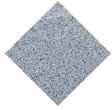


UM372LM  
Bench

# Kube Mad

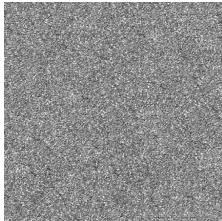


Precast  
Concrete



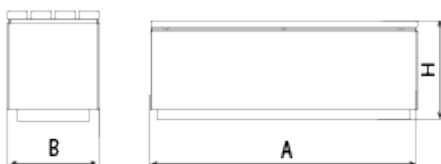
**KUBE MAD 2000 designer Bench**, total dimensions (length x height x depth) 2000x490x500 mm, made of rough, granite-grey prefabricated concrete and a bench made of natural tropical wood planks (treated with a triple-layer Lignus coating, a fungicidal, insecticidal and water-repellent protector). It can be placed in single elements or in groups. It rests on a prepared surface under its own weight.

**Concrete:** Reinforced concrete with a pickled and water-repellent finish. Manufactured with cement, sand, and gravel embedded within a metal structure. Shot blasting results in a high-quality, durable texture.



Gray

**Hardwood treated with LIGNUS:** Wood from responsible forestry. Density greater than 930kg/m<sup>3</sup>, at 12% humidity, treated with a triple-layer LIGNUS coating, fungicide, insecticide, and water-repellent that provides protection against moisture penetration. Final finish with a layer of natural pigment in a satin finish, which provides additional protection against UV rays, the main cause of deterioration in this type of material.



Ref.	A	B	B1	H
UM372LM	2000	500	-	490
UM372LP	2000	500	-	775
UM372SLM	500	500	-	490
UM372SLP	500	500	-	775

+49 (0) 521 450 131-2 | [mb@bas-mobilier.de](mailto:mb@bas-mobilier.de)

