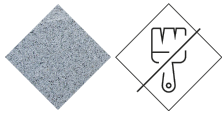




UM372

Bench

# Kube

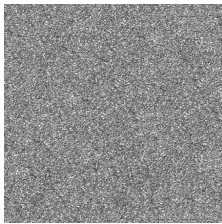


Precast Concrete Low maintenance



**KUBE designer Bench** , total dimensions (length x height x depth) 2000 x 450 x 500 mm, made of rough, granite-gray precast concrete. It can be placed individually or in groups. It rests on a prepared surface under its own weight.

**Concrete:** Reinforced concrete with a pickled and water-repellent finish. Manufactured with cement, sand, and gravel embedded within a metal structure. Shot blasting results in a high-quality, durable texture.



Gray



Ref.	A	B	B1	H
UM372	2000	500	-	450
UM372S	500	500	-	450
UM348S	Ø 580	-	-	450

**Kube**  
UM372S



**Kube Ficus**  
UM348S



