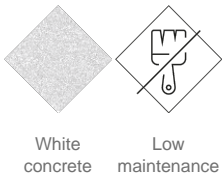


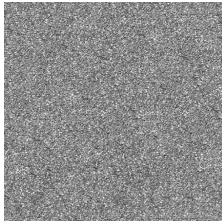
UM371L
Bench
Ela

By Josep Suriñach © ® BENITO



ELA 3000 designer Bench , total dimensions (length x height x depth) 3000 x 420 x 800 mm, made with a molded, water-repellent reinforced concrete seat in polished granite white, and a matte stainless steel frame. It rests on a prepared surface under its own weight.

Concrete: Reinforced concrete with a pickled and water-repellent finish. Manufactured with cement, sand, and gravel embedded within a metal structure. Shot blasting results in a high-quality, durable texture.



Gray

Stainless steel: Structural alloy with a high chromium and nickel content, resistant to corrosion. High resistance to weather, humidity, UV rays and chemical agents present in urban environments. Thanks to the natural formation of a protective passive layer, stainless steel does not require additional coatings, ensuring excellent durability, low maintenance and a clean, timeless appearance – even under demanding conditions such as coastal or industrial areas.



Ref.	A	B	H	H1
UM371L	3000	800	420	-
UM371LP	3000	800	870	420
UM371LM	3000	800	460	420

