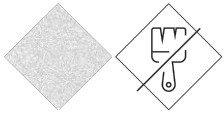




UM370RC

Bench

# Toledo



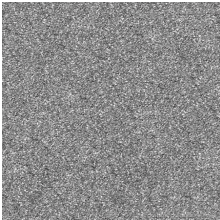
White  
concrete

Low  
maintenance

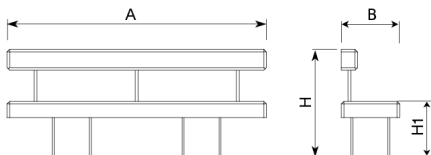


**TOLEDO 2000 Bench by BENITO**, total dimensions (length x height x depth) 2000 x 845 x 560 mm, made of granite-white precast concrete, backrest supported by four steel rods covered in stainless steel tubing. It rests on a prepared surface under its own weight.

**Concrete:** Reinforced concrete with a pickled and water-repellent finish. Manufactured with cement, sand, and gravel embedded within a metal structure. Shot blasting results in a high-quality, durable texture.



Gray



| Ref.    | A    | B   | H   | H1  |
|---------|------|-----|-----|-----|
| UM370   | 2000 | 450 | 425 | -   |
| UM370RC | 2000 | 560 | 845 | 450 |

Toledo  
UM370



