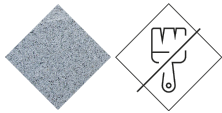




UM369RG
Bench

Volga R

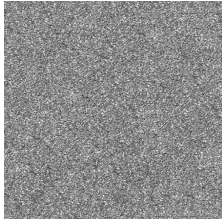


Precast Concrete Low maintenance

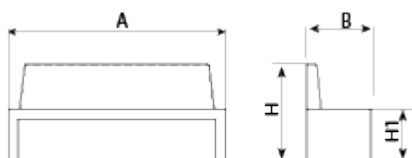


VOLGA R designer Bench with backrest, total dimensions (length x height x depth) 2000 x 850 x 600 mm, made of rough, granite-gray reinforced precast concrete with a polished top. It is floor-standing by its own weight, with sturdy ends for easy cleaning and maintenance.

Concrete: Reinforced concrete with a pickled and water-repellent finish. Manufactured with cement, sand, and gravel embedded within a metal structure. Shot blasting results in a high-quality, durable texture.



Gray



| REF. | A | B | H | H1 |
|---------|------|-----|-----|-----|
| UM369RG | 2000 | 600 | 850 | 450 |



