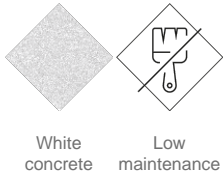


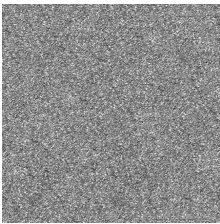


UM369
Bench
Volga



VOLGA 2000 designer Bench , total dimensions (length x height x depth) 2000 x 450 x 600 mm, made of smooth, granite-white precast concrete. It can be placed individually or in groups. It rests on a prepared surface under its own weight.

Concrete: Reinforced concrete with a pickled and water-repellent finish. Manufactured with cement, sand, and gravel embedded within a metal structure. Shot blasting results in a high-quality, durable texture.

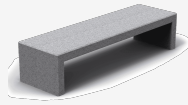


Gray

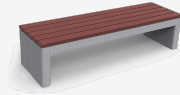


Ref.	A	B	H
UM369	2000	600	450
UM369G	2000	600	450
UM369GLM	2000	600	480
UM369LM	2000	600	480

Volga G
UM369G



Volga G Mad
UM369GLM



Volga Mad
UM369LM

