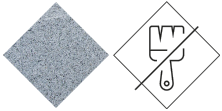




UM359SR

Chair

Petrus

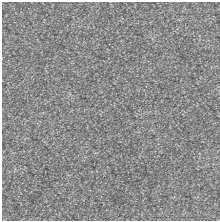


Precast Concrete Low maintenance

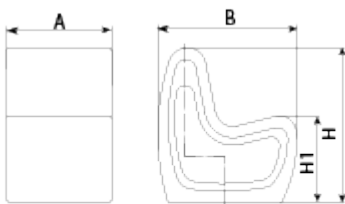


PETRUS designer chair with backrest, total dimensions (length x height x depth) 600 x 820 x 800 mm, made of rough, granite-gray precast concrete. It can be placed individually or in groups. It rests on a prepared surface under its own weight.

Concrete: Reinforced concrete with a pickled and water-repellent finish. Manufactured with cement, sand, and gravel embedded within a metal structure. Shot blasting results in a high-quality, durable texture.



Gray



Ref.	A	B	H	H1
UM359	1640	610	470	-
UM359S	600	600	470	-
UM359SR	600	800	820	460
UM359T	600	1610	820	645
UM359S	600	600	470	-
UM359SR	600	800	820	460
UM359S	600	600	470	-
UM359SR	600	800	820	460



V. 2026-05-14 | The constant improvement and evolution of our products may result in some modifications of the technical specifications and characteristics of the products without prior notice.