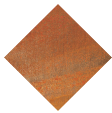


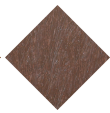


UM352PR
Bench

Alp ReBnew



Corten steel



ReBnew material



20 years warranty



Low maintenance



ALP ReBnew designer Bench , overall dimensions (length x height x depth) 2200x830x605 mm, made of steel sheet painted in MARSON color. ReBnew profiles (BENITO's recycled polymer, produced entirely from yellow recycling bin packaging and requiring no maintenance) with a 110x40x1800mm cross-section. Eco-friendly, made from recycled product, and 100% recyclable. Stainless steel screws.

Recommended anchoring: M10 floor fixing screws depending on surface and project

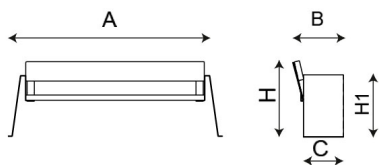
ReBnew: 100% recycled polymer, sturdy and durable, derived from urban, industrial, and domestic waste... It is weather-resistant, resistant to oils, acids, and seawater. It does not splinter or crack, nor does it rot or dry out.

Irregular surface finish makes the board extremely durable as it effectively hides scratches caused by vandalism. Nevertheless, surface scratches can be repaired to restore it to a like-new condition.

Scratch Repair on ReBnew

AWARDED WITH "DER BLAUE ENGEL": Product with low environmental impact throughout its lifecycle. It is awarded to products that meet criteria for reducing environmental impact in manufacturing, recycling, packaging, use, emissions, collection, and disposal. In addition to environmental criteria, it includes quality, safety, energy consumption, and other considerations. It is one of the most prestigious labels globally.

Corten steel: The material itself creates its own protection through oxidation. The oxidation process goes through different stages of color until it reaches "stop," which is when it acquires its final color and stops losing rust and staining. The oxidation process and its tone vary depending on the location where the product is installed and the sun/rain/wind cycles to which it is exposed.



REF.	A	B	H	H1
UM352PR	2200	605	830	460

Alp
UM352



