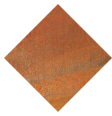


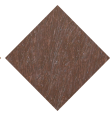


UM351PR
Bench

Lao ReBnew



Corten steel



ReBnew material



20 years warranty



Low maintenance



LAO ReBnew designer Bench , total dimensions (length x height x depth) 1800x470x470 mm, made of Corten steel sheet (maintenance-free). ReBnew profiles (BENITO's recycled polymer, produced entirely from yellow bin packaging and requiring no maintenance) with a section of 110x40x1800 mm. Eco-friendly, it comes from recycled products and is 100% recyclable. Stainless steel hardware.

Recommended anchoring: M10 ground fixing screws depending on the surface and project.

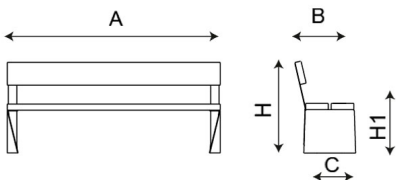
ReBnew: 100% recycled polymer, sturdy and durable, derived from urban, industrial, and domestic waste... It is weather-resistant, resistant to oils, acids, and seawater. It does not splinter or crack, nor does it rot or dry out.

Irregular surface finish makes the board extremely durable as it effectively hides scratches caused by vandalism. Nevertheless, surface scratches can be repaired to restore it to a like-new condition.

Scratch Repair on ReBnew

AWARDED WITH "DER BLAUE ENGEL": Product with low environmental impact throughout its lifecycle. It is awarded to products that meet criteria for reducing environmental impact in manufacturing, recycling, packaging, use, emissions, collection, and disposal. In addition to environmental criteria, it includes quality, safety, energy consumption, and other considerations. It is one of the most prestigious labels globally.

Corten steel: The material itself creates its own protection through oxidation. The oxidation process goes through different stages of color until it reaches "stop," which is when it acquires its final color and stops losing rust and staining. The oxidation process and its tone vary depending on the location where the product is installed and the sun/rain/wind cycles to which it is exposed.



REF.	A	B	H1
UM351PR	1800	470	470

