



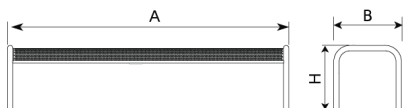
UM340B

Backless Bench

Vallès

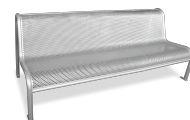


Bench with legs made of Ø40 mm steel tube. Seat and backrest made of 2 mm steel sheet perforated with Ø7 mm holes treated with Ferrus, a protective process that guarantees high resistance to corrosion.



Ref.	A	B	H	H1
UM340	2065	760	855	430
UM340D	2065	1530	870	450
UM340B	2080	500	-	450

Vallès
UM340



Vallès Doble
UM340D



