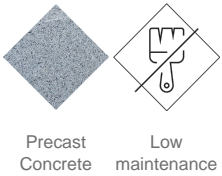


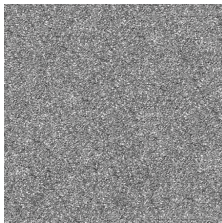


UM1375P
Planter
Lisa

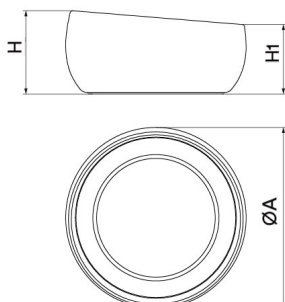


LISA designer Planter , total dimensions (Ø x H 1 x H 2) 710x480x400 mm, made of rough, granite-gray precast concrete. It can be placed individually or in groups. It rests on a prepared surface under its own weight.

Concrete: Reinforced concrete with a pickled and water-repellent finish. Manufactured with cement, sand, and gravel embedded within a metal structure. Shot blasting results in a high-quality, durable texture.



Gray



Ref.	A	B	H	H1
UM1375G	1200	1200	600	500
UM1375P	710	710	480	400

Lisa
UM1375G



