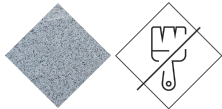




UM1373

Planter

Kube



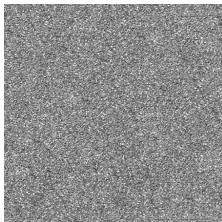
Precast
Concrete

Low
maintenance

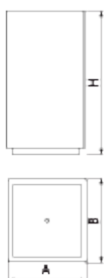


KUBE designer Planter , total dimensions (width x depth x height) 500 x 500 x 980 mm, made of rough, granite-gray precast concrete. It rests on a prepared surface under its own weight.

Concrete: Reinforced concrete with a pickled and water-repellent finish. Manufactured with cement, sand, and gravel embedded within a metal structure. Shot blasting results in a high-quality, durable texture.



Gray



Ref.	A	B	H
UM1372	580	580	580
UM1373	500	500	980
UM1673	500	500	880



+49 (0) 521 450 131-2 | mb@bas-mobilier.de

V. 2026-06-08 | The constant improvement and evolution of our products may result in some modifications of the technical specifications and characteristics of the products without prior notice.