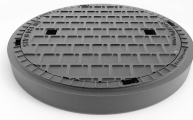
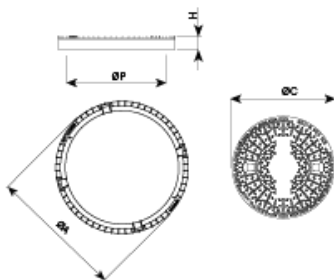


T2069



T2069GM



Marcar is designed to support pedestrian traffic. In particular, pavements or similar surfaces

- Made from spheroidal graphite ductile cast iron, according to ISO 1083 (Type 500-7) and standard EN 1563.
- Compliant with the European standard UNE EN-124.
- Closure with two screws.
- Groove to facilitate the opening process.
- Metal non-slip surface.
- Coated with non-toxic, non-flammable and non-polluting water-soluble black paint.

REF.		ØA	H	ØC	ØP	UN.
T2069	B125	700	80	648	600	10