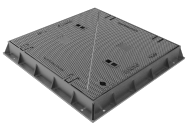
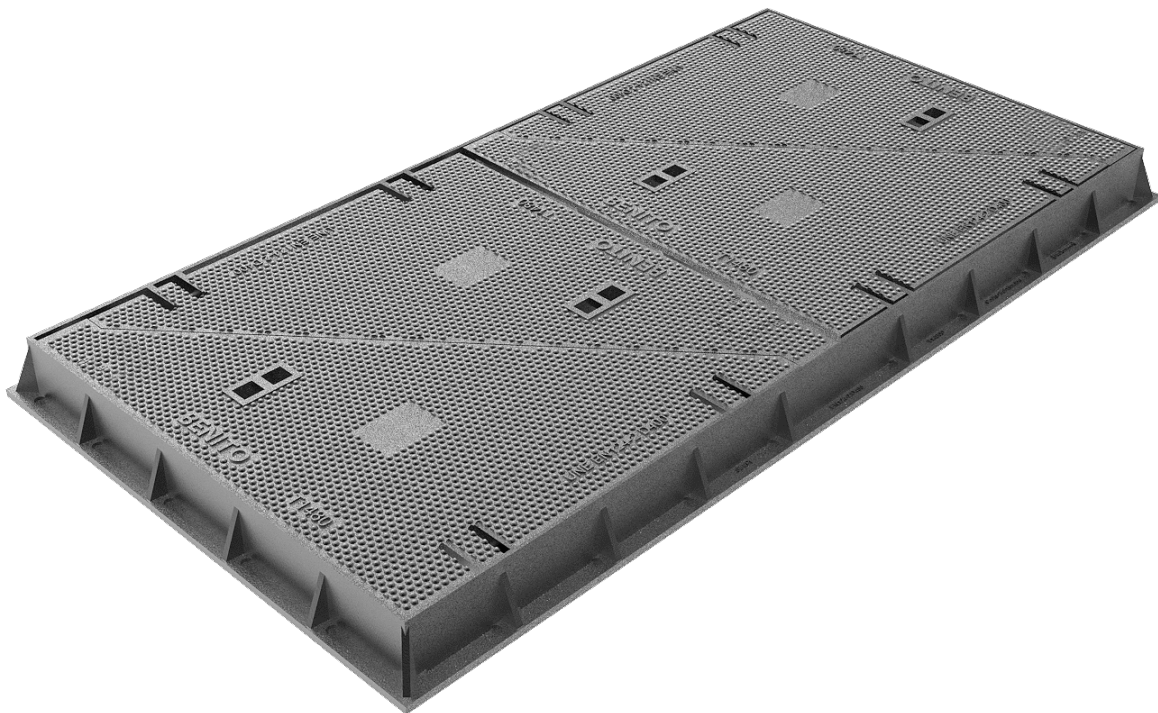
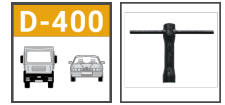
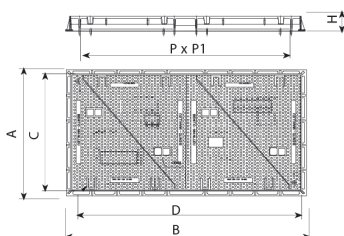


D400 Triangular

T1480D



T1480



Triangular is designed to withstand medium traffic. It is perfect for installing on roads with an ADT of 1,000-20,000, particularly road carriageways (including pedestrian streets), stabilised hard shoulders and parking areas for all manner of vehicles.

- Made of spheroidal graphite ductile iron, as per ISO 1083 (Type 500-7) and standard EN 1563.
- Complies with European standard UNE EN-124.
- Metal non-slip surface.
- Coated with non-toxic, non-flammable and environmentally safe black paint.

REF.		A	B	H	C	D	P	P1	UN.
T1480	D400	870	870	100	785	700	660	760	8
T1480D	D400	870	1660	100	780	1575	660	1555	5