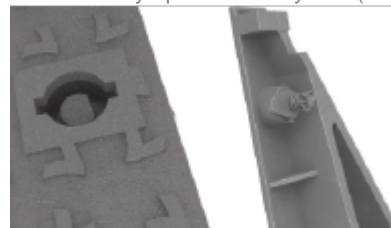


Comunicación is designed to withstand medium traffic. It is perfect for installing on roads with an ADT of 1,000-20,000, particularly road carriageways (including pedestrian streets), stabilised hard shoulders and parking areas for all manner of vehicles.

- Made of spheroidal graphite ductile iron, as per ISO 1083 (Type 500-7) and standard EN 1563.
- Complies with European standard UNE EN-124.
- Includes sound insulation seal Metal non-slip surface.
- Coated with non-toxic, non-flammable and environmentally safe black paint.
- Includes key-operated safety lock (Ref. TL08).



REF.	A	B	H	C	D	P	P1	UN.	
T1311N	D400	1255	1068	80	1230	1045	1100	910	6