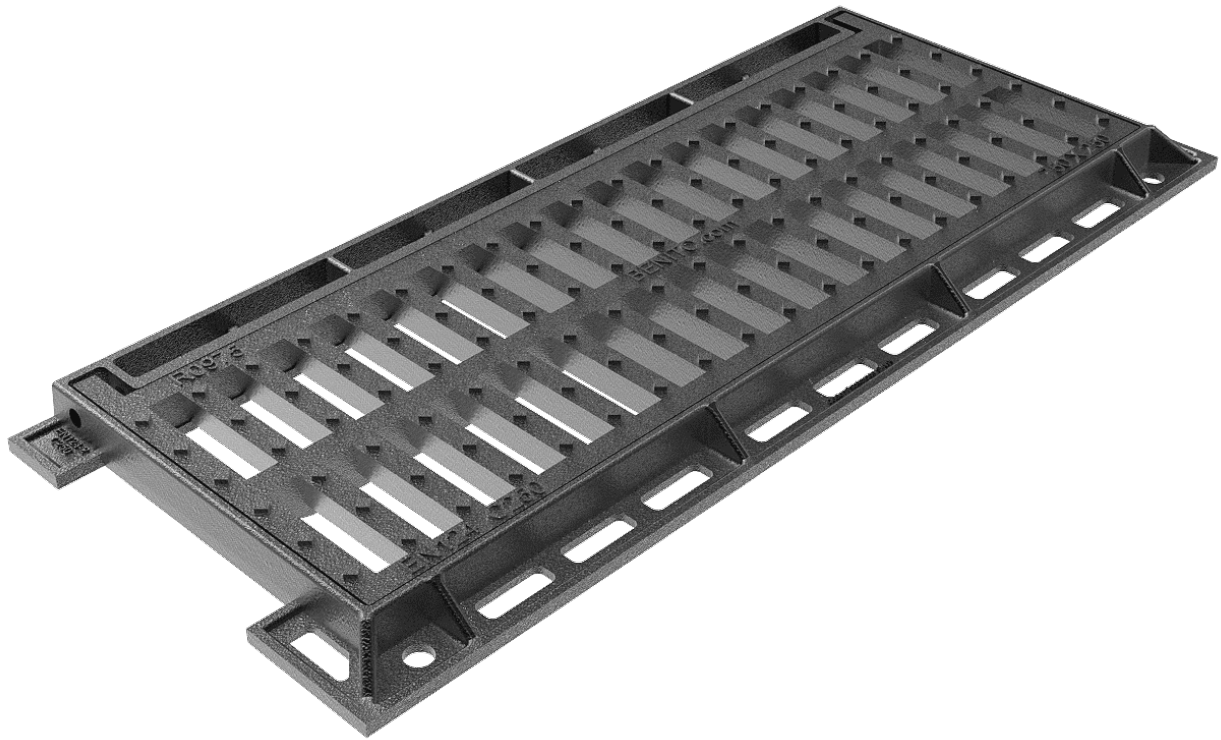
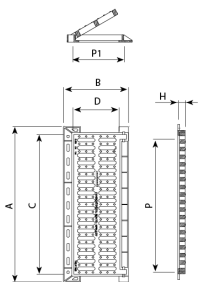


Impu D4

R0975D4



R0975



Impu D4 is designed to withstand heavy traffic. Perfect for installation on roads with an AADT of 1,000-20,000, especially roadways (including pedestrian streets), stabilized shoulders, and parking areas for all types of vehicles.

- Made of ductile iron, in spheroidal graphite, according to ISO 1083 (Type 500-7) and EN 1563 standard.
- Complies with European standard UNE EN-124.
- Articulated anti-theft device.
- Rear channel that guarantees high absorption.
- Central reinforcement and anti-bicycle.
- Non-slip metal surface.
- Coated with black, non-toxic, non-flammable and non-polluting paint

REF.	A	B	C	D	H	P	P1	dm2	UN.
R0975D4	835	335	760	290	55	720	215	10.5	-