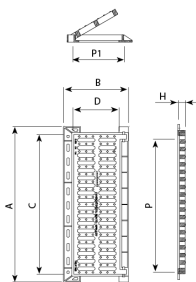
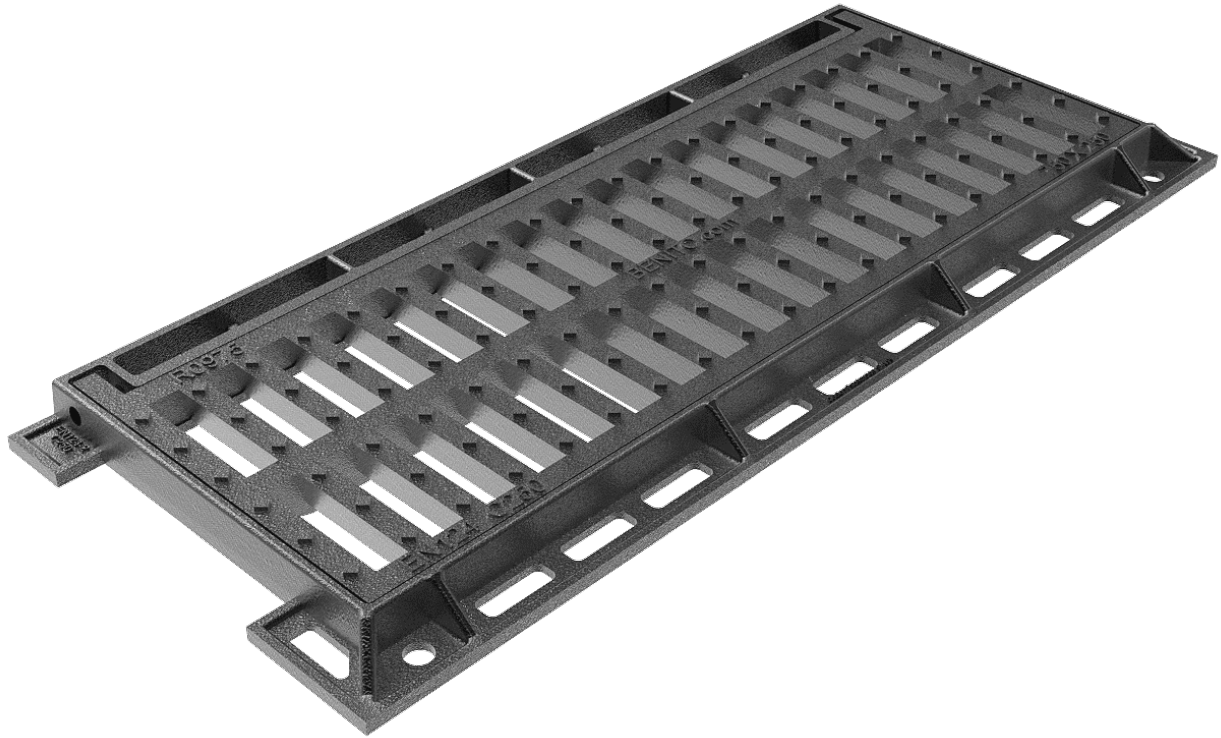


# C250 Impu

R0975



Impu is designed to support soft traffic. Perfect for installing on roads with an ADT of 500 to 1.000, particularly hard shoulders and ditches.

- Made from spheroidal graphite ductile cast iron, according to ISO 1083 (Type 500-7) and standard EN 1563.
- Compliant with the European standard UNE EN-124.
- Hinged theft-proof cover.
- Rear pipe to guarantee high absorption.
- Central, anti-bike reinforcement.
- Metal non-slip surface.
- Coated with non-toxic, non-flammable and non-polluting water-soluble black paint.

REF.	A	B	C	D	H	P	P1	dm2	UN.
R0975	835	335	755	300	40	720	280	10.5	30