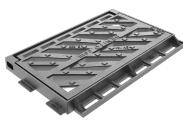
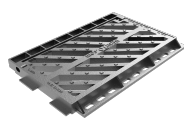
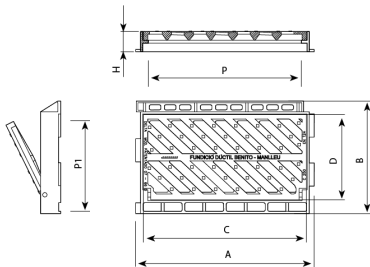

**R0766V**

**R0745**

**R0766**


Delta is designed to support soft traffic. Perfect for installing on roads with an ADT of 500 to 1.000, particularly hard shoulders and ditches.

- Made from spheroidal graphite ductile cast iron, according to ISO 1083 (Type 500-7) and standard EN 1563.
- Compliant with the European standard UNE EN-124.
- Hinged theft-proof cover.
- With chain-linked flaps for a drainage duct.
- Diagonal bar design (anti-bike) and rear pipe to guarantee high absorption.
- Metal non-slip surface.
- Coated with non-toxic, non-flammable and non-polluting water-soluble black paint.

REF.		A	B	C	D	H	P	P1	dm2	UN.
R0745	C250	500	305	455	265	35	425	230	8	102
R0766	C250	625	395	565	300	40	530	265	8	80
R0766V	C250	620	390	565	300	70	530	265	8	20
R0775	C250	790	335	745	250	40	715	230	10	51