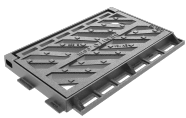
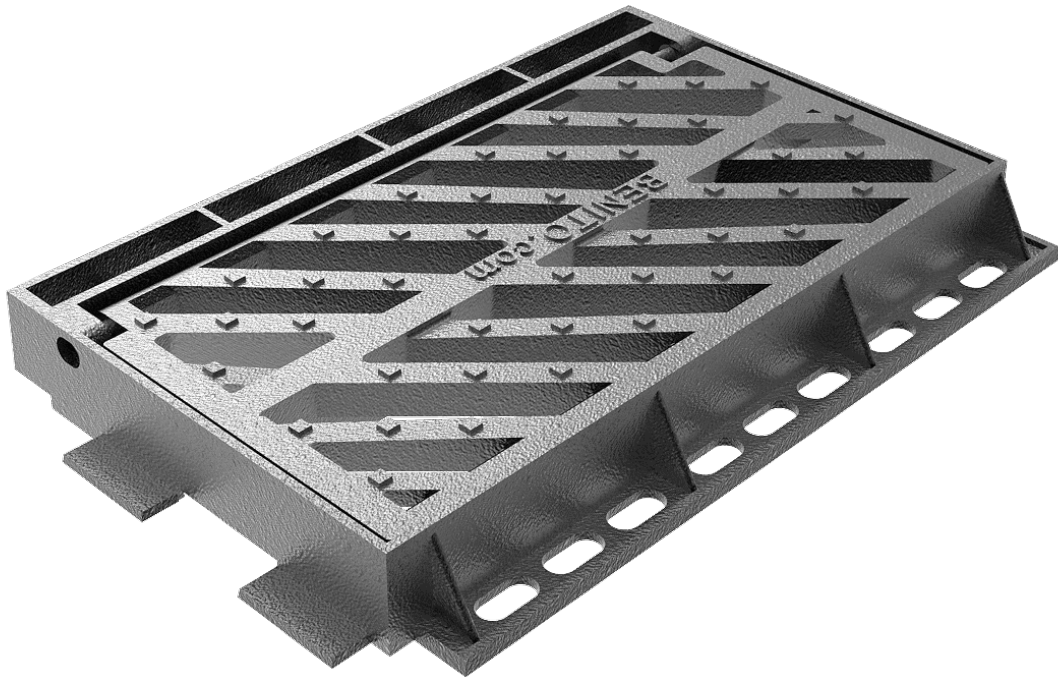
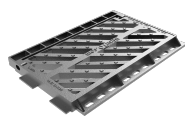


C250 Delta 50V

R0766V



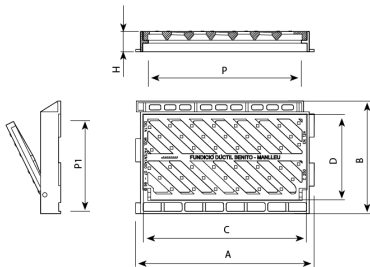
R0745



R0766



R0775



Delta is designed to support soft traffic. Perfect for installing on roads with an ADT of 500 to 1.000, particularly hard shoulders and ditches.

- Made from spheroidal graphite ductile cast iron, according to ISO 1083 (Type 500-7) and standard EN 1563.
- Compliant with the European standard UNE EN-124.
- Hinged theft-proof cover.
- With chain-linked flaps for a drainage duct.
- Diagonal bar design (anti-bike) and rear pipe to guarantee high absorption.
- Metal non-slip surface.
- Coated with non-toxic, non-flammable and non-polluting water-soluble black paint

REF.		A	B	C	D	H	P	P1	dm2	UN.
R0745	C250	500	305	455	265	35	425	230	8	102
R0766	C250	625	395	565	300	40	530	265	8	80
R0766V	C250	620	390	565	300	70	530	265	8	20
R0775	C250	790	335	745	250	40	715	230	10	51