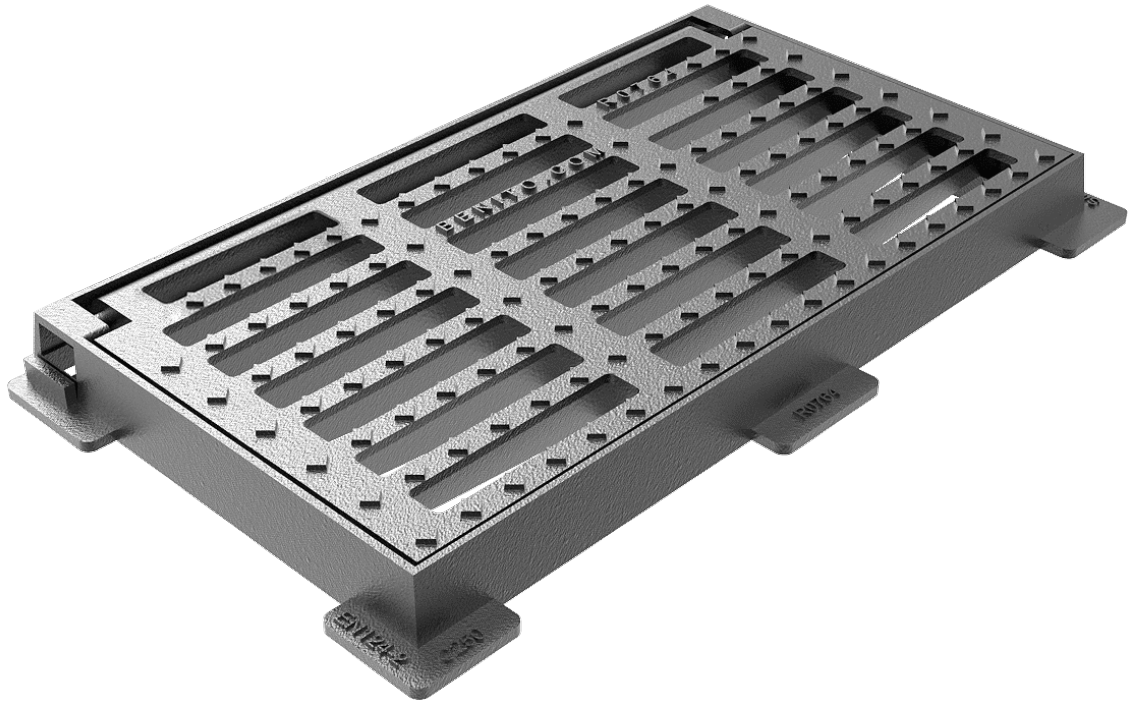


# C250 Tipping

R0764



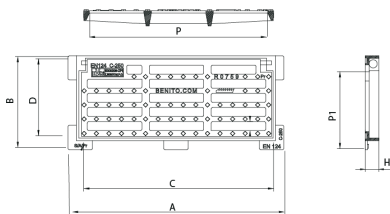
R0764D4



R0759



R0746



Abatible is designed to support soft traffic. Perfect for installing on roads with an ADT of 500 to 1.000, particularly hard shoulders and ditches.

- Made from spheroidal graphite ductile cast iron, according to ISO 1083 (Type 500-7) and standard EN 1563.
- Compliant with the European standard UNE EN-124.
- Hinged theft-proof cover.
- Metal non-slip surface.
- Coated with non-toxic, non-flammable and non-polluting water-soluble black paint.

REF.	A	B	C	D	H	P	P1	dm2	UN.
R0746	520	255	460	240	30	430	205	60	
R0759	660	290	590	240	45	550	205	7	30
R0764	720	405	650	355	55	595	305	10	30
R0764D4	720	405	650	355	55	595	305	10	30