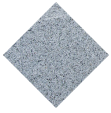




PA673

Litter Bin

# Kube Nin

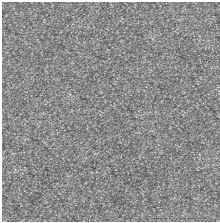


Precast  
Concrete

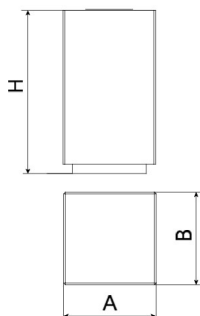


**NIN designer Litter Bin**, total dimensions ( $\varnothing$  x H) 500x880 mm, 140 liters, made of rough, granite-gray precast concrete. Galvanized steel bag-securing ring. It rests on a prepared surface, supported by its own weight and anchored with one  $\varnothing 10$  bolt.

**Concrete:** Reinforced concrete with a pickled and water-repellent finish. Manufactured with cement, sand, and gravel embedded within a metal structure. Shot blasting results in a high-quality, durable texture.



Gray



Ref.	A	B	H
PA672	500	500	880
PA672S	510	510	1100
PA673	$\varnothing 500$	-	880

