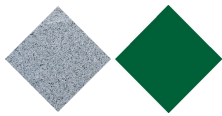


PA672SV

Litter Bin

# Kube Selectif Verde



Precast  
Concrete

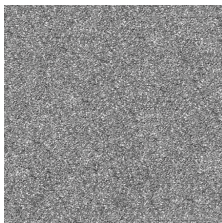
RAL  
6005



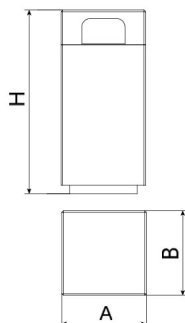
**KUBE designer Litter Bin**, total dimensions (width x depth x height) 510x510x1100 mm, 140 litres, made from rough, granite-grey precast concrete. Bag securing ring and steel top lid (treated with the Ferrus process, the triple-layer protection for iron, which guarantees optimal corrosion resistance). With a green RAL-6029 cap. It rests on a prepared surface, under its own weight and anchored with one Ø10 bolt.

**Steel with FERRUS treatment:** an iron protection process that ensures optimal corrosion resistance. The Ferrus treatment consists of three layers applied after cleaning all dirt and impurities using shot blasting, and it involves an electrolytic bath followed by an epoxy primer and a final coating of polyester powder paint.

**Concrete:** Reinforced concrete with a pickled and water-repellent finish. Manufactured with cement, sand, and gravel embedded within a metal structure. Shot blasting results in a high-quality, durable texture.



Gray



Ref.	A	B	H
PA672S2	510	510	1100
PA672S3	510	510	1100
PA672SA	510	510	1100
PA672SAZ	510	510	1100
PA672SM	510	510	1100
PA672SV	510	510	1100

Kube Selectif  
PA672S2



KUBE SELECTIF  
PA672S3



# Litter Bin Kube Selectif Verde

PA672SV

We offer the possibility to customize urban furniture through personalized marking to enhance your corporate image:

- 100 x 80 mm aluminum plate with screen printing.

