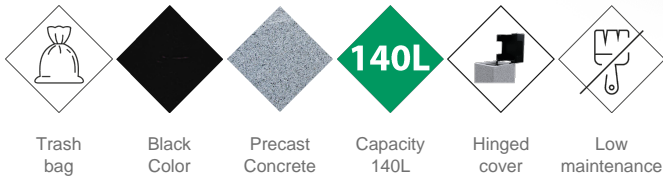




PA672S

Litter Bin

Kube

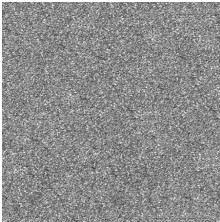


Trash bag Black Color Precast Concrete Capacity 140L Hinged cover Low maintenance

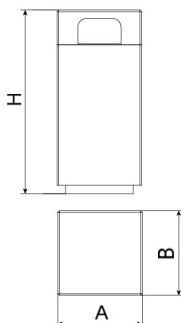
KUBE designer Litter Bin, total dimensions (width x depth x height) 510x510x1100 mm, 140 litres, made from rough, granite-grey precast concrete. Bag securing ring and steel top lid (treated with the Ferrus process, the triple-layer protection for iron, which guarantees optimal corrosion resistance). With epoxy primer and black polyester powder paint. With a lid. Supported on a prepared surface, by its own weight and anchored with one Ø10 bolt.

Steel with FERRUS treatment: an iron protection process that ensures optimal corrosion resistance. The Ferrus treatment consists of three layers applied after cleaning all dirt and impurities using shot blasting, and it involves an electrolytic bath followed by an epoxy primer and a final coating of polyester powder paint.

Concrete: Reinforced concrete with a pickled and water-repellent finish. Manufactured with cement, sand, and gravel embedded within a metal structure. Shot blasting results in a high-quality, durable texture.

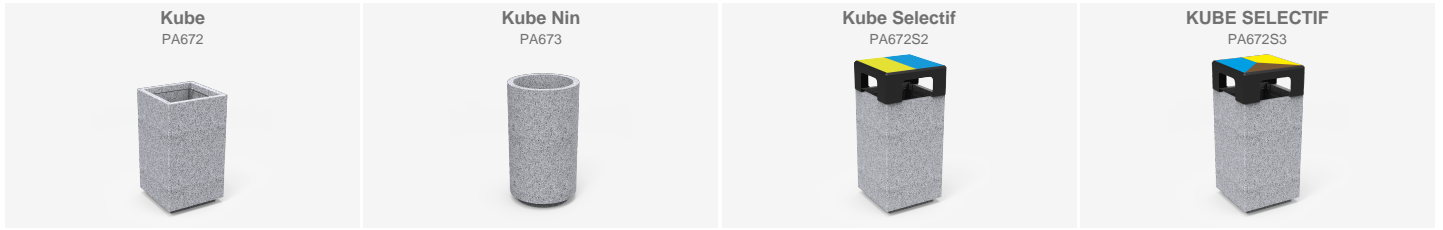


Gray



Ref.	A	B	H
PA672	500	500	880
PA672S	510	510	1100
PA673	Ø500	-	880





We offer the possibility to customize urban furniture through personalized marking to enhance your corporate image:
- 100 x 80 mm aluminum plate with screen printing.

